



# ITGAE (light chain, Cleaved-Arg177) rabbit pAb

|                           |  |
|---------------------------|--|
| <b>Catalog No</b>         | YP-Ab-16818  |
| <b>Isotype</b>            | IgG  |
| <b>Reactivity</b>         | Human;Rat;Mouse;   |
| <b>Applications</b>       | WB;IHC   |
| <b>Gene Name</b>          | ITGAE  |
| <b>Protein Name</b>       | ITGAE (light chain, Cleaved-Arg177)  |
| <b>Immunogen</b>          | Synthesized peptide derived from human ITGAE (light chain, Cleaved-Arg177)   |
| <b>Specificity</b>        | This antibody detects endogenous levels of Human ITGAE (light chain, Cleaved-Arg177, protein was cleaved amino acid sequence between 177-178 )   |
| <b>Formulation</b>        | Liquid in PBS containing 50% glycerol, 0.5% BSA and 0.02% sodium azide.  |
| <b>Source</b>             | Polyclonal, Rabbit,IgG   |
| <b>Purification</b>       | The antibody was affinity-purified from rabbit serum by affinity-chromatography using specific immunogen.  |
| <b>Dilution</b>           | WB 1:500-2000;IHC-p 1:50-300   |
| <b>Concentration</b>      | 1 mg/ml  |
| <b>Purity</b>             | ≥90%   |
| <b>Storage Stability</b>  | -20°C/1 year   |
| <b>Synonyms</b>           | Integrin alpha-E (HML-1 antigen;Integrin alpha-IEL;Mucosal lymphocyte 1 antigen;CD antigen CD103) [Cleaved into: Integrin alpha-E light chain; Integrin alpha-E heavy chain]   |
| <b>Observed Band</b>      | 17 128kD   |
| <b>Cell Pathway</b>       | Membrane; Single-pass type I membrane protein.   |
| <b>Tissue Specificity</b> | Expressed on a subclass of T-lymphocytes known as intra-epithelial lymphocytes which are located between mucosal epithelial cells.   |
| <b>Function</b>           | domain:The integrin I-domain (insert) is a VWFA domain. Integrins with I-domains do not undergo protease cleavage.,function:Integrin alpha-E/beta-7 is a receptor for E-cadherin. It mediates adhesion of intra-epithelial T-lymphocytes to epithelial cell monolayers.,induction:Integrin alpha-E/beta-7 is induced by TGFB1.,similarity:Belongs to the integrin alpha chain family.,similarity:Contains 1 VWFA domain.,similarity:Contains 5 FG-GAP repeats.,subunit:Heterodimer of an alpha and a beta subunit. The alpha subunit is composed of an heavy and a light chains linked by a disulfide bond. Alpha-E associates with beta-7.,tissue specificity:Expressed on a subclass of T-lymphocytes known as intra-epithelial lymphocytes which are located between mucosal epithelial cells., |
| <b>Background</b>         | integrin subunit alpha E(ITGAE) Homo sapiens Integrins are heterodimeric integral membrane proteins composed of an alpha chain and a beta chain. This  |



gene encodes an I-domain-containing alpha integrin that undergoes post-translational cleavage in the extracellular domain, yielding disulfide-linked heavy and light chains. In combination with the beta 7 integrin, this protein forms the E-cadherin binding integrin known as the human mucosal lymphocyte-1 antigen. This protein is preferentially expressed in human intestinal intraepithelial lymphocytes (IEL), and in addition to a role in adhesion, it may serve as an accessory molecule for IEL activation. [provided by RefSeq, Jul 2008],

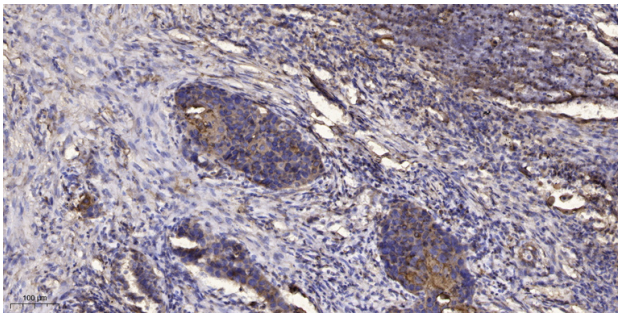
**matters needing attention**

Avoid repeated freezing and thawing!

**Usage suggestions**

This product can be used in immunological reaction related experiments. For more information, please consult technical personnel.

## Products Images



Immunohistochemical analysis of paraffin-embedded human Squamous cell carcinoma of lung. 1, Antibody was diluted at 1:200(4° overnight). 2, Tris-EDTA,pH9.0 was used for antigen retrieval. 3,Secondary antibody was diluted at 1:200(room temperature, 45min).